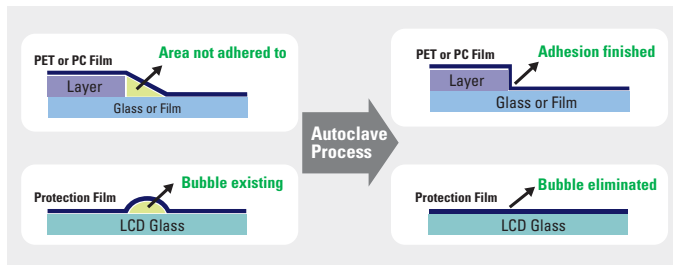


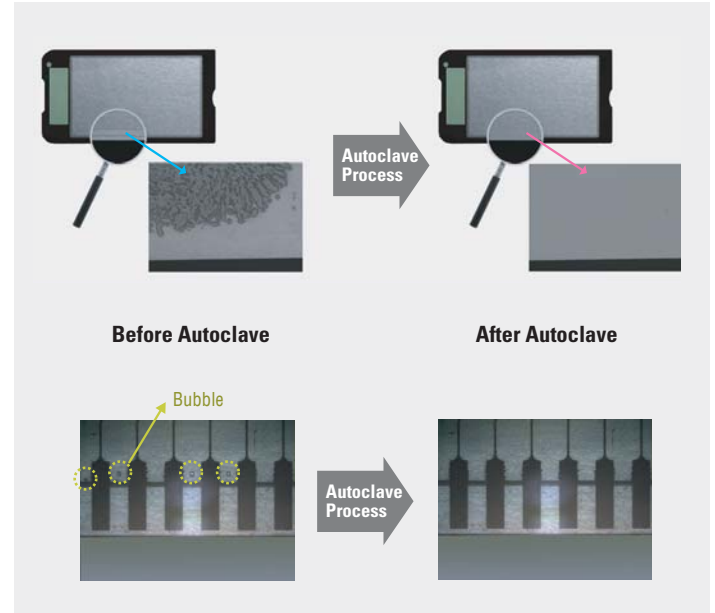
Autoclave for binding film & glass

In the electronics industries, there is one of the key quality issue needs to be improved for binding touch panel or thin films on the mobile phone glass display without air bubble. Our autoclaves for this application are very suitable solution for this purpose. In addition to temperature and pressure control, our autoclaves will provide better productivity with better quality on the production process.

Principle



Result



Features

- Providing stable temperature consistency
- Heat treated and stress relieved materials used for equipment
- Pressing type by isostatic constant temperature.
- Improved air bubble elimination efficiency
- Stable and accuracy in pressure and temperature setting

Application



Applicable for binding film or glass film for the display and mobile phone etc.



Specification

Type	Touch Panel & LCD, PDP Binding Autoclave	Pressurizing Autoclave	Glass Binding Autoclave
Product			
Vessel	<ul style="list-style-type: none"> - Material : SUS304 & SCM - Max. Working : 300psi@100 °C - Working Zone : I.D : 300~820 mm L.D : 500~1,300 mm - Seal Type : O-ring - Cover Type : Quick Closure Clamp 	<ul style="list-style-type: none"> - Material : SUS304 & SCM - Max. Working : 900psi@200 °C - Working Zone : I.D : 300~820 mm L.D : 500~3,000 mm - Seal Type : O-ring - Cover Type : Quick Closure Clamp 	<ul style="list-style-type: none"> - Material : Alloy Steel & SCM - Max. Working : 900psi@200 °C - Working Zone : I.D : 300~820 mm L.D : 500~100,000 mm - Seal Type : O-ring - Cover Type : Quick Closure Clamp
Heater	<ul style="list-style-type: none"> - Kantal Bellows Heater - Cover Material : SUS304 - Forced Conection - 220/380VAC, 3-ph, 9kw 	<ul style="list-style-type: none"> - Kantal Bellows Heater - Cover Material : SUS304 - Forced Conection - 220/380VAC, 3-ph,12kw 	<ul style="list-style-type: none"> - Kantal Bellows Heater - Cover Material : SUS304 - Forced Conection - 220/380VAC, 3-ph, 15kw
Fan	<ul style="list-style-type: none"> - Moter : 220/380VAC, 3h, 60Hz - Drive Type : Magnedrive 	<ul style="list-style-type: none"> - Moter : 220/380VAC, 3h, 60Hz - Drive Type : Magnedrive 	<ul style="list-style-type: none"> - Moter : 380VAC, 3h, 60Hz - Drive Type : Magnedrive
Control	<ul style="list-style-type: none"> - Temp : PID Control (Deviation : ±1 °C) - Pressure : On/Off Control (Deviation : ±5psi) - Time : Timer 	<ul style="list-style-type: none"> - Temp : PID Control (Deviation : ±1 °C) - Pressure : On/Off Control (Deviation : ±5psi) - Time : Timer 	<ul style="list-style-type: none"> - Temp : PID Control (Deviation : ±3 °C) - Pressure : On/Off Control (Deviation : ±15psi) - Time : Timer
Cooling	<ul style="list-style-type: none"> - Industrial Water or Chiller 	<ul style="list-style-type: none"> - Industrial Water or Chiller - Use of Below 60 °C 	<ul style="list-style-type: none"> - Industrial Water or Chiller - Use of Below 60 °C
Vacuum	<ul style="list-style-type: none"> - N/A 	<ul style="list-style-type: none"> - Rotary Vacuum Pump - 1 x 10⁻² torr 	<ul style="list-style-type: none"> - N/A
Option	<ul style="list-style-type: none"> - Touch Screen - Recorder - PC & Controller 	<ul style="list-style-type: none"> - Touch Screen - Recorder - PC & Controller 	<ul style="list-style-type: none"> - Touch Screen - Recorder - PC & Controller

* Can be changed upon customer's requirements.